

Quantum-series

Ultra-low latency Thunderbolt™ Audio Interfaces and Studio Command Centers

Owner's Manual



 МУЗЦЕНТР
МУЗЫКАЛЬНОЕ ОБОРУДОВАНИЕ
<https://muzcentre.ru>

Table of Contents

1 Overview — 1

- 1.1 Introduction — 1
- 1.2 Quantum-series Interface Hardware Features — 1
- 1.3 UC Surface Features — 2
- 1.4 Studio One Artist Features — 2
- 1.5 What is in the Box — 2

2 Hookup — 3

- 2.1 Front Panel Connections and Controls — 3
- 2.2 Back Panel Connections — 5
- 2.3 Quantum Hookup Diagram — 8
- 2.4 Quantum 2 Hookup Diagram — 9

3 Connecting to a Computer — 10

- 3.1 Installation for Windows and macOS — 10
- 3.2 Using a Quantum Interface with Popular Audio Applications — 10
- 3.3 Controlling Quantum Mic Preamps with MIDI — 12

4 UC Surface Control Software — 13

- 4.1 UC Surface Launch Window — 14
- 4.2 Input Controls — 14
- 4.3 Main Knob Controls — 15
- 4.4 Main Output Controls — 15
- 4.5 Talkback (Quantum) — 15
- 4.6 Headphone Select — 16
- 4.7 MIDI Control — 16
- 4.8 RTA — 17

5 Aggregating Devices — 19

- 5.1 macOS — 19
- 5.2 Windows — 21

6 Studio One Artist Quick Start — 23

- 6.1 Installation and Authorization — 23
- 6.2 Setting Up Studio One — 24
 - 6.2.1 Configuring Audio Devices — 25
 - 6.2.2 Configuring MIDI Devices — 25
- 6.3 Creating a New Song — 29
 - 6.3.1 Configuring Your I/O — 30
 - 6.3.2 Creating Audio and MIDI Tracks — 31
 - 6.3.3 Recording an Audio Track — 32
 - 6.3.4 Adding Virtual Instruments and Effects — 33
- 6.4 Integrated Quantum Controls — 35
 - 6.4.1 Preamp Controls — 35
 - 6.4.2 Talkback and Monitoring — 36
- 6.5 Monitor Mixing in Studio One — 36
 - 6.5.1 Cue Mix Functions — 36
 - 6.5.2 Punching In — 37

7 Technical Information — 39

- 7.1 Specifications — 39

8 Warranty Information — 41

- 8.1 How Consumer Law Relates To This Warranty — 41

1 Overview

1.1 Introduction



Thank you for purchasing a PreSonus Quantum-series Thunderbolt Audio Interface and Studio Command Center. PreSonus Audio Electronics has designed Quantum-series interfaces utilizing high-grade components to ensure optimum performance that will last a lifetime. Loaded with high-headroom, Class A, digitally controlled XMAX™ microphone preamplifiers; an ultra-low latency Thunderbolt recording and playback engine; talkback; monitor functions; and more, Quantum interfaces break new boundaries for musical performances and productions. All you need is a computer with a Thunderbolt connection, a few microphones and cables, powered speakers, and your creativity, and you're ready to record, mix, and release your music.

We encourage you to contact us with questions or comments regarding your PreSonus Quantum interface. PreSonus Audio Electronics is committed to constant product improvement, and we highly value your suggestions. We believe the best way to achieve our goal of constant product improvement is by listening to the real experts: our valued customers. We appreciate the support you have shown us through the purchase of this product and are confident that you will enjoy your Quantum interface!

About this manual: We suggest that you use this manual to familiarize yourself with the features, applications, and correct connection procedures for your Quantum interface before trying to connect it to your computer. This will help you avoid problems during installation and setup. This manual covers the operation of both the Quantum and Quantum 2. Whenever a functional difference is described, the Quantum's features will be called out first, followed by the Quantum 2.

Throughout this manual you will find **Power User Tips** that can quickly make you a Quantum-series interface expert. In addition to the Power User Tips, you will find an assortment of tutorials throughout this manual. These tutorials are designed to help you get the most out of your Quantum interface and its suite of companion software.

1.2 Quantum-series Interface Hardware Features

- Pristine 24-bit audio up to 192 kHz
- Flawless analog signal path with top-quality 120 dB digital conversion
- 8/4 digitally controlled XMAX microphone preamps
- Preamp control from Studio One or UC Surface
- Simultaneous I/O up to 26/22 inputs and 32/24 outputs (8x14 / 4x6 at 192 kHz)
- 8/4 DC coupled balanced outputs for flexible monitoring
- 2/1 high-volume headphone amps with dedicated DACs
- Tight integration with Studio One version 3 for multitrack music production
- Compatible with most music software for Mac® and Windows®
- Stackable Thunderbolt Ports for clustering

1.3 UC Surface Features

UC Surface is a powerful monitor-mixing application that allows you to control your Quantum preamps, talkback and monitoring functions.

- Remote control preamp level and 48V phantom power
- Remote control, talkback, dim, and mute
- Remote control over line input sensitivity

1.4 Studio One Artist Features

All PreSonus audio interfaces include PreSonus Studio One Artist recording software, which comes with more than 4 GB of plug-ins, loops, and samples, giving you everything you need for music recording and production. All monitor mixing and preamp control functions for your Quantum-series interface are integrated into Studio One's unique Cue Mix feature. The Quick Start Guide in **Section 6** of this manual will help you configure your Quantum interface and provide you with a brief overview of Studio One's features.

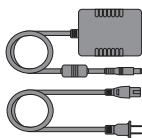
- Cue Mix provides complete integrated control over all Quantum functions
- Unlimited track count, inserts, and sends
- 20 high-quality, Native Effects™ plug-ins; amp modeling (Ampire XT), delay (Analog Delay, Beat Delay), distortion (RedLightDist™), dynamics processing (Channel Strip, Compressor, Gate, Expander, Fat Channel, Limiter, Tricomp™), equalizer (Channel Strip, Fat Channel, Pro EQ), modulation (Autofilter, Chorus, Flage, Phaser, X-Trem), reverb (Mixverb™, Room Reverb), and utility (Binaural Pan, Mixtool, Phase Meter, Spectrum Meter, Tuner)
- More than 4 GB of loops, samples, and instruments, featuring: Presence™ XT virtual sample player, Impact virtual drum machine, SampleOne™ virtual sampler, Mai Tai virtual polyphonic analog modeling synth, Mojito virtual analog-modeled subtractive synthesizer
- Innovative and intuitive MIDI mapping
- Powerful drag-and-drop functionality for faster workflow
- Available for macOS and Windows

1.5 What is in the Box

Your Quantum-series interface package contains the following:



PreSonus Quantum or Quantum 2 Thunderbolt Audio Interface and Studio Command Center



External power supply



Studio One Key Commands Guide



Product registration and software authorization card

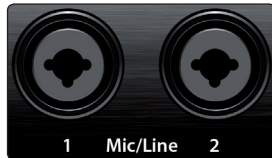


PreSonus Health Safety and Compliance Guide

Power User Tip: All companion software and drivers for your PreSonus Quantum-series interface are available for download from your My PreSonus user account. Simply visit <http://my.presonus.com> and register your Quantum-series interface to receive downloads and licenses.

2 Hookup

2.1 Front Panel Connections and Controls



Microphone inputs. Your Quantum-series interface is equipped with 8/4 digitally controlled PreSonus XMAX microphone preamplifiers for use with all types of microphones. The XMAX design provides a Class A input buffer, followed by a dual-servo gain stage. This arrangement results in ultra-low noise and wide gain control, allowing you to boost signals without increasing noise. The 1/4-inch front panel inputs on Quantum can be either line or instrument. By default, they are set to line. These inputs are not switching on the Quantum 2.

Each analog input on the Quantum-series interface features a combo jack. This convenient connector accepts either a 1/4-inch phone plug or an XLR plug. Mic Inputs 3-8/4 are located on the rear of the unit. Each input on your Quantum-series interface is also auto-sensing. When an XLR is connected, the signal is routed to the preamp. When a TRS is connected, the preamp is bypassed and the input signal is sent directly to the ADC. When nothing is connected, Channels 1 and 2 on Quantum will default to line inputs, Channel 3-8 will default to mic. All analog inputs on the Quantum 2 default to mic.



Instrument inputs. The 1/4-inch TS connectors on Channels 1 and 2 are for use with instruments (guitar, bass, etc.). When an instrument is plugged into the instrument input, the mic preamp is bypassed, and the signal is routed to the instrument preamplifier stage. Quantum users must engage the Inst button to use the Instrument inputs.

***Please note:** As with any audio input device, plugging in a microphone or an instrument, or turning phantom power on or off, will create a momentary spike in the audio output of your Quantum-series interface. Because of this, we highly recommend that you turn down the channel trim before changing connections or turning phantom power on or off. This simple step will add years to life of your audio equipment.*



Preamp controls. These controls allow you to adjust the gain and enable phantom power for every onboard microphone and instrument preamp.

- **Preamp Gain:** Use this control to adjust the level of microphone preamps 1-8/4 and instrument preamps 1 and 2. The display to the far right will show the current trim level. This encoder is also used to change from +4dbu to -10dbv when a line-level TRS jack is connected.
- **Next / Prev:** Use these buttons to select the microphone preamp you wish to control. The display to the right of the trim control will show which preamp is currently being controlled.
- **48V:** The Quantum-series interfaces provide 48V phantom power for each microphone preamp. This feature can be individually enabled for each channel, using this button. When 48V is active, the blue LED at the top of that channel's meters will illuminate.

Warning: Phantom power is only required for condenser microphones and can severely damage dynamic mics, especially ribbon mics. Therefore, switch phantom power off for all channels where it is not required.

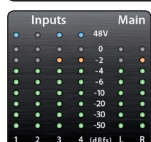
XLR connector wiring for phantom power:

Pin 1 = GND Pin 2 = +48V Pin 3 = +48V



Talkback mic and controls (Quantum). Quantum features an onboard talkback microphone. Press the Talk button to patch the signal to the selected mixes. To control the level of the onboard Talkback mic, select the “c” (Comm) channel in the preamp control section and use the encoder to adjust the level.

Power User Tip: Talkback routing for Quantum is handled inside your DAW. It will show up as an input stream in your DAW I/O set-up.



Input meters. These eight-LED meters show the input level of the analog inputs on your Quantum-series interface. The green LEDs will illuminate when the input signal ranges from -50dBFS to -4dBFS. The yellow LEDs will illuminate when the input signal reaches -2dBFS. The red Clip LED will illuminate when your input signal reaches -0.5dBFS. At this level, the signal will begin to overload the analog-to-digital converters and exhibit signs of clipping. Use the gain controls to keep the signal below this level.



Main. The Main knob can control any or all of the outputs on the rear panel of your Quantum and has a range of -80 dB to 0 dB. In addition to level control, the main outputs have the following controls:



- **Meters.** These meters display the signal level received from Driver Returns 1 and 2 (Main Left/Right). These meters have the same range as the input meters (-50 dBFS to -0.5 dBFS) and are before the main output level.



- **Dim / Mute (Quantum).** This button controls both the Dim and Mute functions for the Main Outputs. Press the button and release it to lower the outputs signal by 20 dB. Press and hold the button to Mute the Main Output signal. The button will illuminate yellow when Dim is active and red when Mute is active. These functions are also available from within UC Surface and Studio One.



- **Mono (Quantum).** Press this button to sum the Main stereo output signal to mono. The mono function is also available from within UC Surface and Studio One.

Power User Tip: Use the Mono feature to verify mono compatibility and to check for phase cancellation in your stereo mixes.



Headphones. Your Quantum-series interface provides two/one headphone output(s), each with its own level control. Each headphone output is provided with its own unique output stream to route audio directly from your DAW (Quantum: playback streams 11/12 and 13/14; Quantum 2: playback streams 5/6). These streams are labeled as “Phones 1” and “Phones 2” in UC Surface. From UC Surface, any mix can be routed to either headphone output. By default on Quantum, Headphone 1 mirrors the Main Output and Headphone 2 mirrors Output 1-2.



A/B (Quantum 2). The A/B button allows you to switch between two mixes. When UC Surface is not accessed, this will toggle between the Headphone streams (5/6) and the Main Mix streams (1/2). When UC Surface is active, you can choose the “B” source from any mix pair.



Power button and Sync light. The lighted ring around the power button of your Quantum is a clock source / sync indicator. It lets you know if your unit is receiving word clock correctly.

- **Blue.** When this light is blue, your Quantum is correctly synced via Thunderbolt, word clock, ADAT, or S/PDIF
- **Flashing red and blue.** Quantum is in the process of trying to sync to a received clock signal.

- **Red.** Quantum is either not synced to your computer or its external clock source is not present.
- **Flashing purple.** The identify button is active in UC Surface.

Power User Tip: Word clock is the timing signal with which digital devices sync frame rates. Proper word clock sync prevents digital devices from having pops, clicks, and distortion in the audio signal due to mismatched digital audio transmission. In general, you will use your Quantum-series interface as the master clock in your studio; it provides high-quality word clock for this purpose. However, if you would like to use another device as the master clock, you can set the input source for clocking in UC Surface. See Section 4.1 for details.

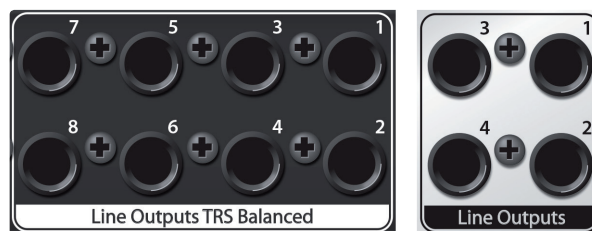
2.2 Back Panel Connections



Rear-panel Mic Inputs. As previously mentioned in Section 2.1, additional microphone preamps are available on the rear of your Quantum interface.

Line Inputs. The 1/4-inch TRS connectors on Channels 3-8/4 are for use with line-level devices. These inputs are scaled to accept line-level signals up to +18 dBu.

Power User Tip: When these inputs are engaged, the microphone preamp circuit is bypassed completely, and no trim control is available. Typical examples of line-level connections are synthesizer outputs, signal processors, and stand-alone mic preamps and channel strips. Use the output level control on your line-level device to adjust its level.



Line Outputs. Quantum-series interfaces have 8/4 line balanced line outputs to route to external devices, such as headphone amps, signal processors, and additional monitors. Each output has an independent playback streams. Every line output is DC coupled to provide control voltage to external analog equipment. This feature can be used with any plug-in that supports it.

Power User Tip: The Main Level knob on the front of your Quantum-series interface can be used to control any or all of these outputs. This is set from UC Surface. See Section 4.3 for more information.



Main Outs (Quantum). These are the main outputs for Quantum. The output level of the Main Outputs is controlled by the Main level control on the front of the unit. Like the eight line outputs, the main outputs have independent playback streams (playback streams 1-2). Both Main Outputs are DC coupled to provide control voltage to external analog equipment. This feature can be used with any pug-in that supports it.



Clock In and Out. These BNC connections allow Quantum-series interfaces to receive and transmit word clock to and from other digital audio devices.

Power User Tip: In UC Surface, when using the BNC Clock input, you will need to set “BNC” as the Clock Source and set the sample rate to correspond to that of the external device. See Section 4.1 for details. A 75Ω BNC word clock cable is required to achieve proper sync.



S/PDIF In and Out. The S/PDIF connections allow two channels of audio to be transmitted and received at rates up to 24-bit, 96 kHz. The S/PDIF I/O also allows all Quantum-series interfaces to send and receive word clock to external digital devices.

Power User Tip: In UC Surface, you will need to set “S/PDIF” as the Clock Source and the sample rate to correspond to the external device when using an external S/PDIF device as your master clock. See Section 4.1 for details.



ADAT – S/MUX In and Out. These are the ADAT – Dual S/MUX connections for your external digital devices. When recording or playing back at 44.1 or 48 kHz, each ADAT I/O will provide 8 of the 16 available channels consecutively, from left to right. When recording or playing back at 88.2 or 96 kHz, each connection will provide four of the available eight channels.

These inputs and outputs do not function at 176.4 or 192 kHz:

	ADAT 1 Input	ADAT 2 Input	ADAT 1 Output	ADAT 2 Output
44.1 / 48 kHz	Channels 11-18 / 7-14	Channels 19-26 / 15-22	Channels 17-24 / 9-16	Channels 25-32 / 17-24
88.2 / 96 kHz	Channels 11-14 / 7-10	Channels 15-18 / 11-14	Channels 17-20 / 9-12	Channels 21-24 / 13-16

When connecting a DigiMax DP88 to your Quantum interface, the ADAT connections will also send and receive preamp control information for the DigiMax DP88, so that it can be controlled directly from UC Surface or Studio One.

Power User Tip: In UC Surface, you will need to set “ADAT 1” as the Clock Source and the sample rate to correspond to the external device when using an external ADAT device as your master clock. See Section 4.1 for details. The ADAT 2 input cannot be used to receive word clock.



Thunderbolt ports. Use these ports to connect your Quantum-series interface to your computer. The second Thunderbolt port can be used to connect other Thunderbolt devices to your computer.

Power User Tip: Your Quantum interface supports clustering over Thunderbolt. In addition to allowing you to use your Quantum-series interface as a Thunderbolt hub, this allows you to chain up to four Quantum interfaces, aggregated over Thunderbolt, for higher I/O counts. See Section 5 for more information.

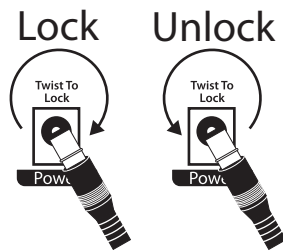


MIDI I/O. These are the MIDI input and output connections. MIDI stands for “Musical Instrument Digital Interface.” However, MIDI can be used for many things other than instruments and sequencing. The MIDI inputs and outputs allow connection to a variety of MIDI-equipped hardware, such as keyboard controllers, and can be used to send and receive MIDI Machine Control and MIDI Time Code.

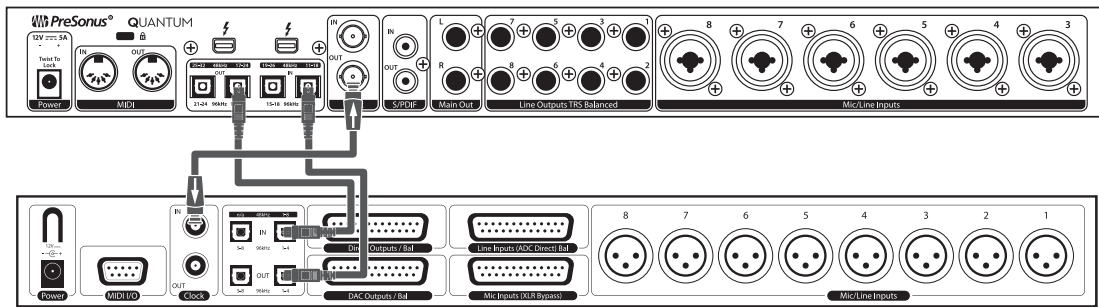
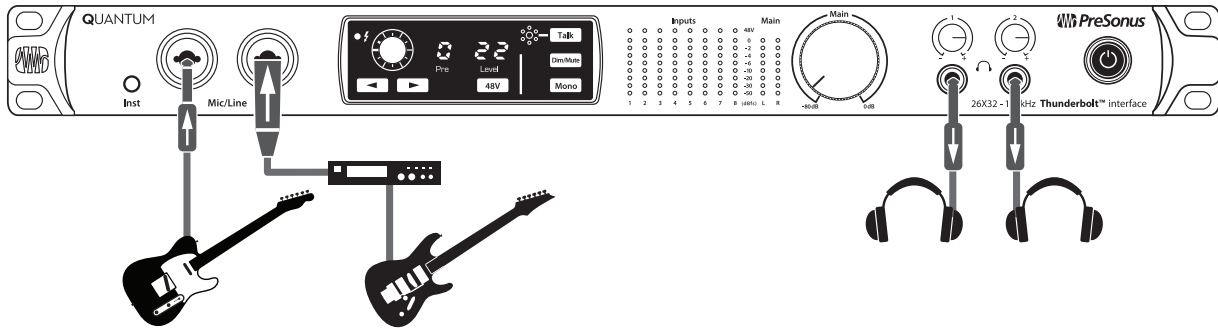
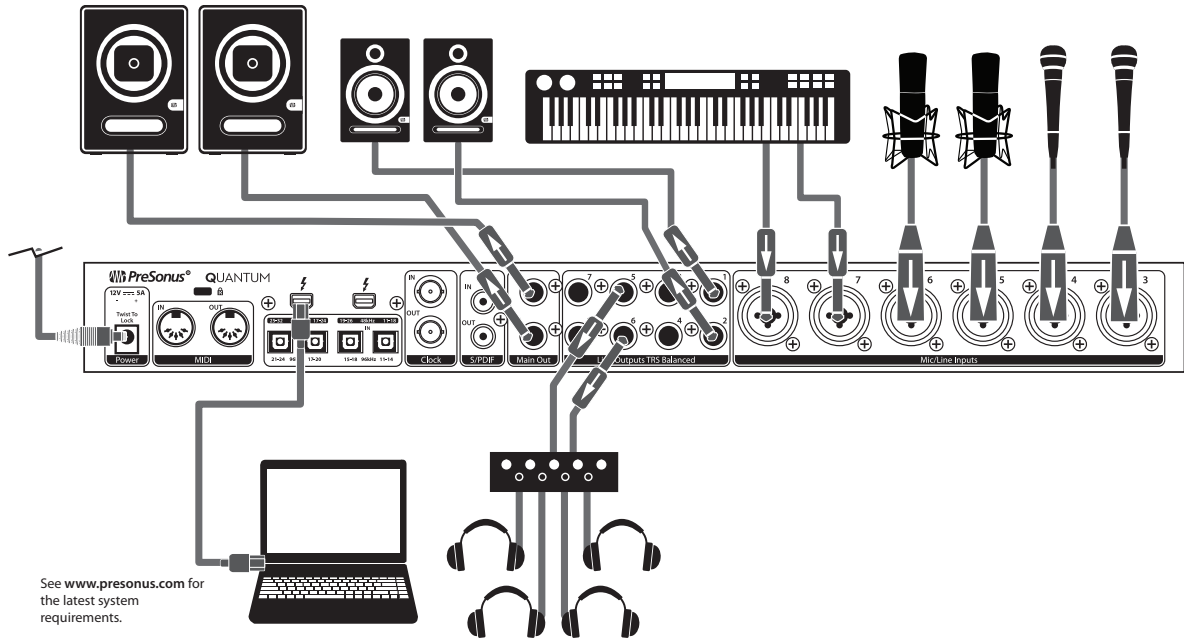
***Note:** MIDI does not carry audio signals but is frequently used to trigger or control an audio source, such as a virtual instrument or hardware synthesizer. You should ensure that MIDI data is correctly sent and received by the appropriate hardware or software. You may also need to route hardware sound sources’ audio to the inputs of your Quantum-series interface. Please consult the User’s Manual of your MIDI devices for help with MIDI setup and usage.*



Power Connection. This is where you connect the Quantum-series interface’s external power supply. Your Quantum interface is equipped with a twist-lock power connection, keep this in mind when connecting disconnecting it from your interface.

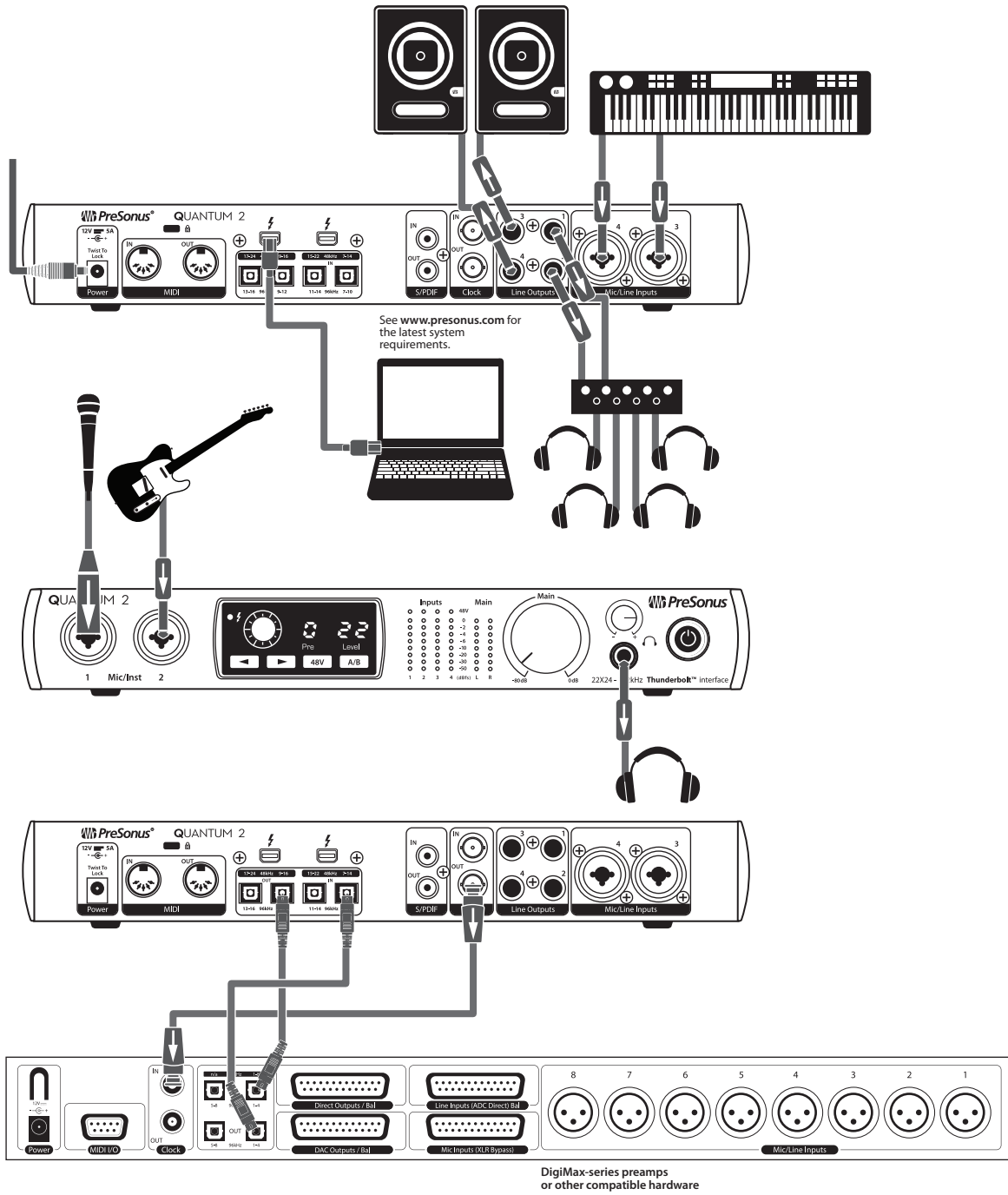


2.3 Quantum Hookup Diagram



DigiMax-series preamps
 or other compatible hardware

2.4 Quantum 2 Hookup Diagram



3 Connecting to a Computer

Your Quantum-series interface is loaded with professional audio tools and flexible monitoring controls. Before connecting to a computer, please visit www.presonus.com/products/Quantum/techspecs to verify the latest system requirements.

Note: *The speed of your processor, amount of RAM, and capacity, size, and speed of your hard drives will greatly affect the overall performance of your recording system. A faster processor and more RAM can reduce signal latency (delay) and improve overall performance.*

The Universal Control installer for macOS and Windows is available for download from your My PreSonus user account. This bundled installer includes Universal Control, UC Surface, and the audio driver for Quantum-series interfaces. To begin, you must first visit <http://my.presonus.com>, create or log into your user account, and register your Quantum interface. Once registered, all software downloads will be available from within your My PreSonus user account.

3.1 Installation for Windows and macOS

Connect your Quantum-series interface to an available Thunderbolt port and launch the Universal Control installer. The installer will take you through each step of the installation process. This application will install the macOS or Windows drivers as well as UC Surface. Please read each message carefully.

It is recommended that you quit all applications before you start the installation.

The Universal Control installer will take you through each step of the installation process.

3.2 Using a Quantum Interface with Popular Audio Applications

Complete setup instructions for Studio One Artist and a brief tutorial on its features can be found in **Section 6** of this manual. However, you can use your Quantum-series interface with any audio-recording application that supports Core Audio or ASIO. Please consult the documentation that came with your audio application for specific instructions on how to select the Quantum-series interface driver as the audio-device driver for your software.

Below are basic driver-setup instructions for a few popular audio applications.

Ableton Live

1. Launch Ableton Live.
2. Go to Options | Preferences | Audio.
3. Choose Driver Type: ASIO | Audio Device: ASIO PreSonus Quantum or Quantum 2.
4. Go to Input Config: Enable and select the desired Input channels.
5. Go to Output Config: Enable and select the desired Output channels.

Apple Logic

1. Launch Logic.
2. Go to Logic | Preferences | Audio.
3. Click on the Devices Tab.
4. On the Core Audio tab, check Enabled.
5. Select PreSonus Quantum or Quantum 2 from the device menu.
6. You will be asked if you'd like to relaunch Logic. Click try (re)launch.

7. Your Quantum features custom I/O labels for faster workflow. To enable these labels for use in Logic, go to Options | Audio | I/O Labels.
8. The second column in the pop-up window will be named Provided by Driver. Activate each of these labels for your Quantum. When you are done, close this window.

Avid Pro Tools 10+

1. Launch Pro Tools.
2. Go to Setup | Hardware and select Quantum or Quantum 2 from the Peripherals list. Click OK.
3. Go to Setup | Playback Engine and select Quantum or Quantum 2 from the menu at the top of the window. Click OK.

Cakewalk Sonar

1. Launch Sonar.
2. Go to Options | Audio... and click on the Advanced tab.
3. Change the Driver Mode to "ASIO." (Note: Using WDM, rather than ASIO, for pro audio applications is not recommended.)
4. Click the "OK" button.
5. Restart Sonar.
6. Go to Options | Audio... and click on the Drivers tab.
7. Highlight all input and output drivers beginning with "PreSonus Quantum" or "PreSonus Quantum 2"
8. Go to Options | Audio... and click on the General tab.
9. Set the Playback Timing Master to "PreSonus Quantum... DAW Out 1" or "PreSonus Quantum 2... DAW Out 1."
10. Set the Recording Timing Master to "PreSonus Quantum... Mic/Inst 1" or "PreSonus Quantum 2... Mic/Inst 1."

Steinberg Cubase

1. Launch Cubase.
2. Go to Devices | Device Setup.
3. Select "VST Audio System" from the Devices column in the Device Setup.
4. Select PreSonus Quantum or Quantum 2 from the ASIO Driver dropdown list.
5. Click "Switch" to begin using the Quantum driver.
6. Once you have successfully changed the driver, go to Devices | VST Connections to enable your input and output buses.

3.3 Controlling Quantum Mic Preamps with MIDI

Quantum microphone preamps can be controlled from the front panel, UC Surface, or Studio One. If you configure your Quantum interface as a MIDI device inside your DAW application, you can also control trim and phantom power from within your DAW environment and store those settings with your session.

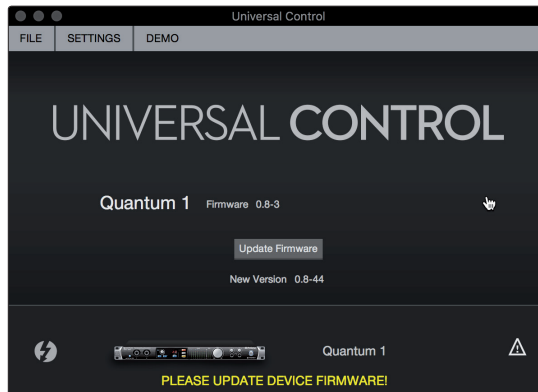
Below is a chart explaining the MIDI controls for your Quantum preamps:

Preamp	MIDI Channel	Trim Level	Phantom Power ON /OFF
Preamp 1	Channel 1	CC #7	CC #14 (0 to 63 = On, 64 to 127 = Off)
Preamp 2	Channel 2	CC #7	CC #14 (0 to 63 = On, 64 to 127 = Off)
Preamp 3	Channel 3	CC #7	CC #14 (0 to 63 = On, 64 to 127 = Off)
Preamp 4	Channel 4	CC #7	CC #14 (0 to 63 = On, 64 to 127 = Off)
Preamp 5 (Quantum)	Channel 5	CC #7	CC #14 (0 to 63 = On, 64 to 127 = Off)
Preamp 6 (Quantum)	Channel 6	CC #7	CC #14 (0 to 63 = On, 64 to 127 = Off)
Preamp 7 (Quantum)	Channel 7	CC #7	CC #14 (0 to 63 = On, 64 to 127 = Off)
Preamp 8 (Quantum)	Channel 8	CC #7	CC #14 (0 to 63 = On, 64 to 127 = Off)

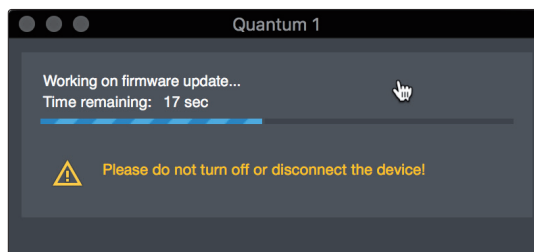
4 UC Surface Control Software

UC Surface is a powerful control software for your Quantum-series interface. These control functions are completely integrated inside Studio One. UC Surface allows users of other popular DAW applications to access these functions. UC Surface provides preamp level controls, phantom power, line-level input sensitivity switching, main encoder assignments, and, for Quantum users, mute/dim and mono functions.

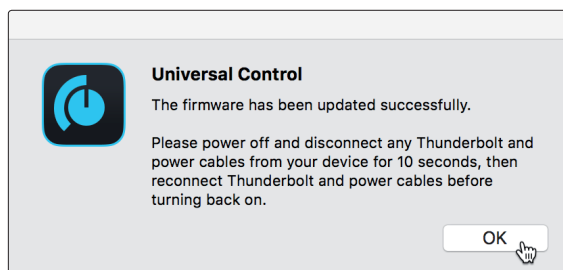
UC Surface is designed to verify that your Quantum-series interface has the correct firmware version installed. You will be prompted if your Quantum-series interface needs its firmware updated. Click on the Update Firmware button to begin the update.



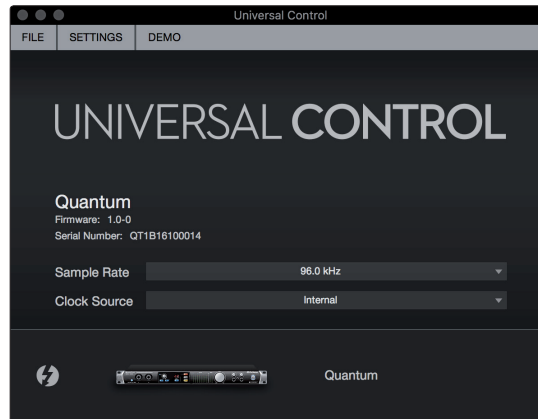
Warning: Do not power off or disconnect your Quantum-series interface during the firmware update. Once the firmware update is successfully completed, you will be alerted and instructed to disconnect your power supply and Thunderbolt cable and reconnect it before rebooting your device. *It is not sufficient to simply power down your unit, you must disconnect the power source.*



When the firmware update is complete, you must disconnect the physical power source from your Quantum-series interface and reconnect it. Powering it off it will not complete the update process.



4.1 UC Surface Launch Window



Sample Rate. Changes the sample rate.

You can set the sample rate to 44.1, 48, 88.2, 96, 176.4, or 192 kHz. A higher sample rate will increase the fidelity of the recording but will increase the file size and the amount of system resources necessary to process the audio.

Clock Source. Sets the digital clock source.

From this menu, you can set the clock source for your Quantum interface: Internal, External S/PDIF, or External ADAT. **Please note:** Only ADAT 1 can be used as a clock source input for your Quantum.

4.2 Input Controls

The following controls are available for your Quantum-series interface inputs:

Microphone and Instrument Preamps



The inputs on your Quantum-series interface are auto-sensing. When an XLR cable is connected, controls for the microphone preamp will be available in UC Surface. These controls include a fully variable gain control and phantom power as well as input metering.

Line Inputs



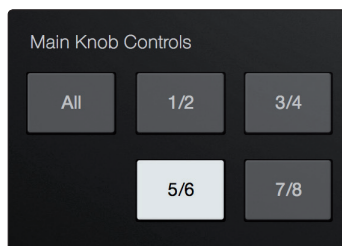
When a 1/4-inch TRS cable is connected to the inputs of your Quantum-series interface, you will be provided with an input sensitivity toggle switch. By default, the input sensitivity is set to +4 dBu. Most professional line-level devices output at this level. Consumer line level is usually -10 dBV. For these lower output devices, switch the input sensitivity to -10 dBV to match your device.

Power User Tip (Quantum users): By default, inputs 1 and 2 are set to line, inputs 3-8 default to mic when nothing is connected.

ADAT Inputs

When a DigiMax DP88 is connected to your Quantum interface's ADAT Input and Output, you will be presented with ADAT controls, allowing you to remote control your DigiMax DP88's preamps, direct line input, and phantom power.

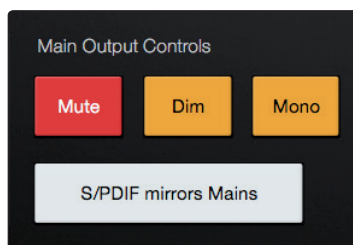
4.3 Main Knob Controls



The large Main level encoder can be used to control any or every output on your Quantum-series interface. Use these controls to select which output levels are adjusted with this knob. It should be noted that this knob always controls the Main Left/Right outputs on Quantum and Outputs 1/2 on Quantum 2. Other analog outputs pairs can be added.

Power User Tip: The volume of any output pair will jump to 0 dB when it is unassigned from the Main Knob. Because of this, make sure to manage your output volume in your DAW before disengaging this option.

4.4 Main Output Controls

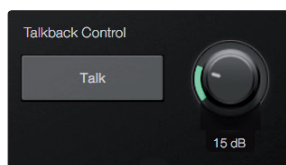


These controls mimic the front panel options on the Quantum, allowing you to remote control the Main Output Mute, Dim and Mono options. These control are not available for Quantum 2.

From here, you can also choose to have your S/PDIF outputs mirror the Main outputs.

4.5 Talkback (Quantum)

The Talkback feature lets you communicate with the performers. Talkback routing is handled directly to your DAW, simply create a track and assign its input to the Talkback and route the track to the desired outputs.



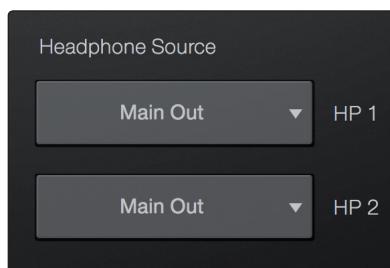
Click on the Talkback button to enable the Talk function on your Quantum. You can then turn on the Talkback mic in any of the mixes from your DAW.

The level of the Talkback mic can also be remote controlled from Studio One, UC Surface, or by selecting the "c" (Comm) channel in the preamp control section and use the encoder to adjust the level(Quantum only).

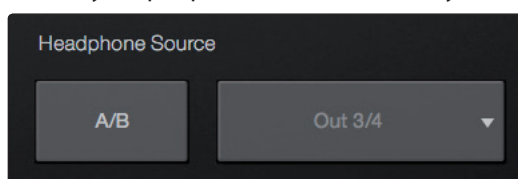
Note: Talkback must be routed to the output pair from your DAW and have its Talkback level above zero for it to be heard through that output. If either has not been done, talkback cannot be heard in that output.

4.6 Headphone Select

The Headphone outputs on your Quantum-series interface feature independent DACs. For Quantum users, the source for both headphone outputs can be selected from any output pair. By default, both headphone outputs mirror the Main Left/Right mix.

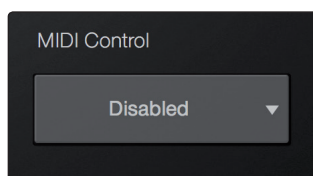


For Quantum 2 users, UC Surface allows you to select the "B" source from any output pair. The "A" source always mirrors outputs 1/2



4.7 MIDI Control

As previously mentioned, the preamps on your Quantum-series interface can be controlled via MIDI over Thunderbolt. This feature can be enabled and disabled from UC Surface.

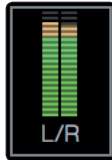


The preamp functions on your Quantum-series interface can be controlled via MIDI from your DAW application, an external MIDI controller, both, or neither. Select 'Internal MIDI Only' if you only want your DAW to send and receive MIDI information to and from the preamp controls. Select 'External MIDI Only' if you would like to control your preamp functions from a MIDI device that is connected to the MIDI connections on the back of your Quantum-series interface. Select 'Enabled' to use both. Select 'Disabled' if you only want local control of your preamps.

Note: Even when MIDI control is disabled, you can still control your preamp functions from UC Surface and Studio One.

See [Section 3.3](#) for the Quantum preamp MIDI mappings.

4.8 RTA

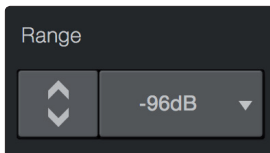


UC Surface provides a real-time analyzer (RTA) in which $x = \text{frequency}$ and $y = \text{amplitude}$ for every input and output. An RTA provides a close visual representation of what you are hearing. It provides a view of the long-term spectrum of the signal, such as the one third-octave spectrum long-term average of a musical performance. To enable the RTA for any input or output, select its meter from the top of the screen.

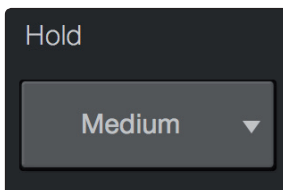


The Quantum RTA provides several customization features that allow you to view the RTA in the way that is most useful for your application.

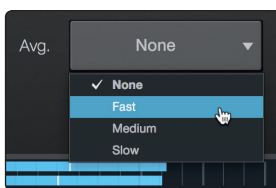
Height. This provides a more or less granular display for the RTA.



Range. Use the Range controls to set the upper and lower decibel limits that the RTA will display.

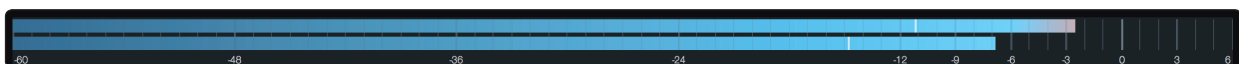


Hold. Use this control to set the peak hold time for each band of the RTA.

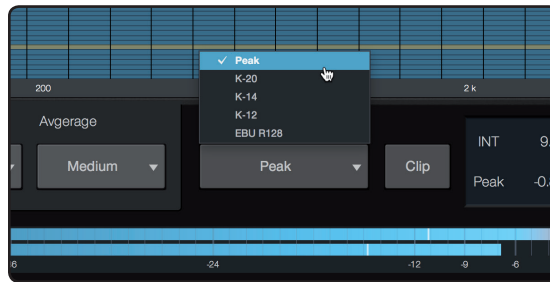


Average. Averaging is a mathematical process that takes multiple data samples and performs division to acquire a statistically more accurate calculation of the response. That's a technical way of saying that it slows down the "real-time" of a real-time analyzer.

At the bottom of the screen, you will find the signal meter. This meter can be customized for your application.



Meter Style. This menu allows you to change the type of output metering displayed at the bottom of the screen.



- **Peak.** This type of metering displays the instantaneous level of the audio signal.
- **K-20, K-14, and K-12.** K-System metering displays loudness metering and dynamic range. Select the scale based on the genre or media format. K-20 is used for film, classical music, and high-fidelity recordings. It provides the most dynamic range visualization. K-14 is used for mainstream pop, rock, and country. K-12 is used for broadcast and radio and provides the least dynamic range visualization.
- **EBU R128.** Displays the perceived loudness of the signal based on the EBU R128 standard.

5 Aggregating Devices

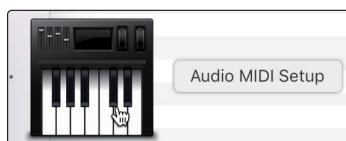
Up to four Quantum interfaces can be aggregated together for combined 104 inputs and 128 outputs at 44.1 and 48 kHz.



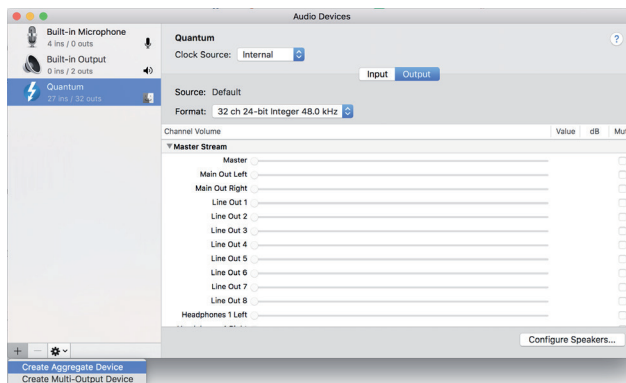
From UC Surface, you can easily locate every Quantum interface connected to your computer by pressing the Identify button in the Device Tab. This will flash the power button purple.

5.1 macOS

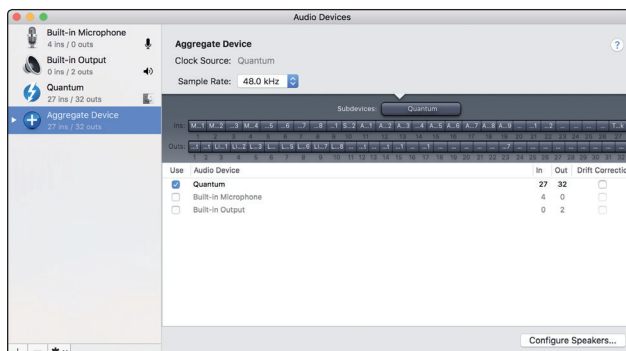
1. Connect the Quantum-series interface you'd like to use as the master clock to your computer first.
2. Launch Audio MIDI Setup.



3. Select Quantum or Quantum 2, and click on the plus sign in the lower left hand corner. Select "Create Aggregate Device."

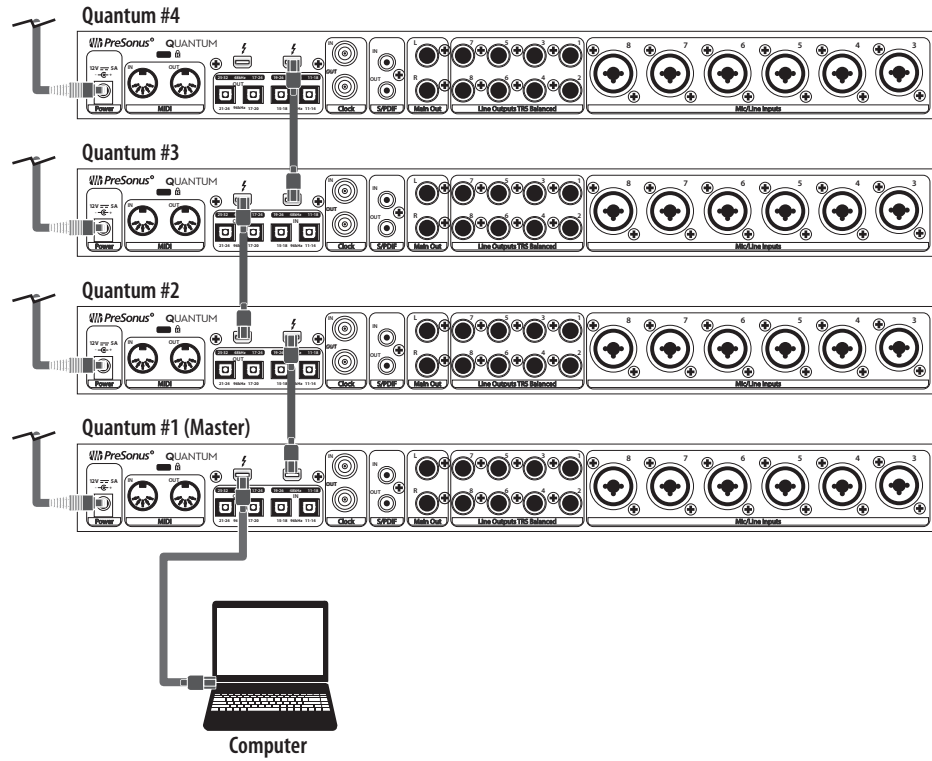


4. Check the Use box to the left of the master Quantum-series interface.

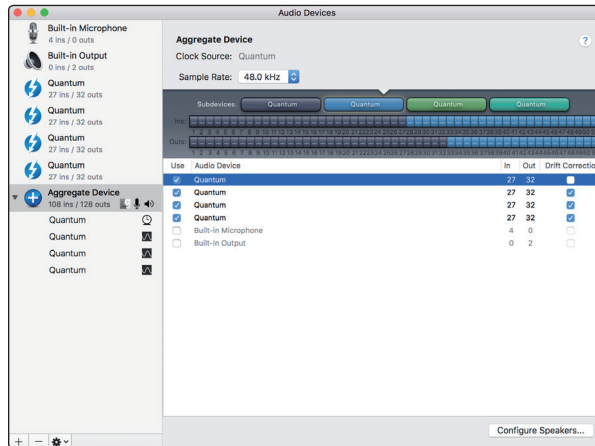


- Connect your other Quantum interfaces.

Power User Tip: For tighter clocking, PreSonus recommends designating one Quantum interface as the master and using BNC wordclock to sync additional units.



- Check the Drift Correction box beside each slaved Quantum-series interface.

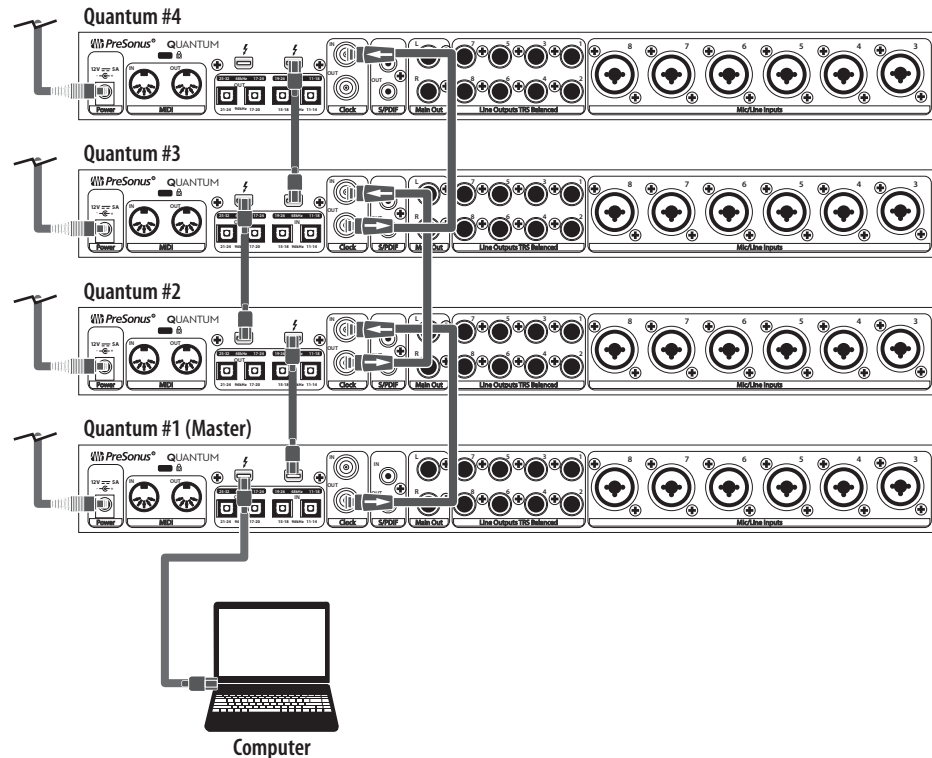


Your Quantum system is now ready to use.

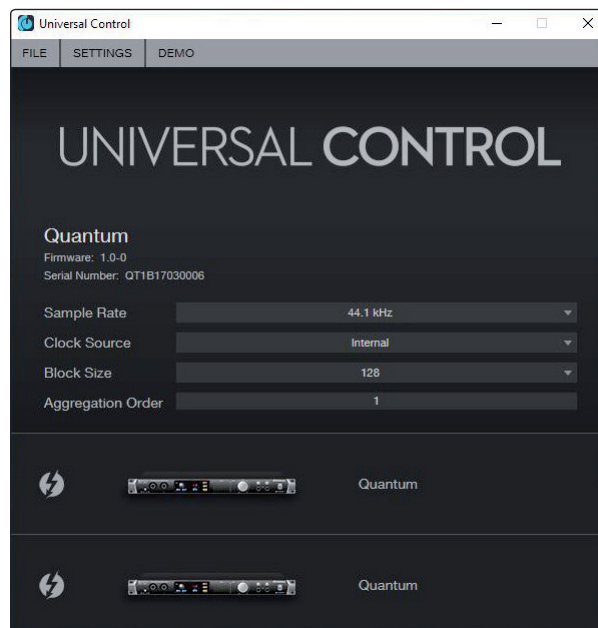
5.2 Windows

1. Connect your Quantum interfaces to your computer and launch Universal Control.

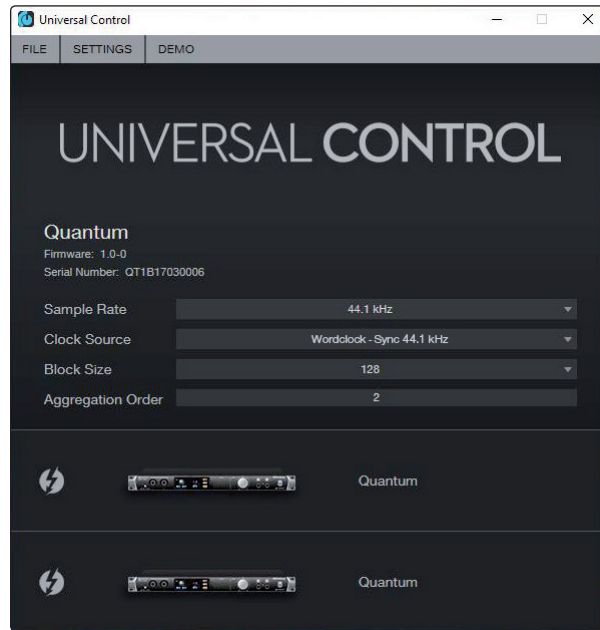
Please Note: Your Quantum interfaces must be clocked to each other via BNC and one unit must be designated as the master.



2. Select the Quantum interface you would like to use as the first bank of channels and set the priority to "1."

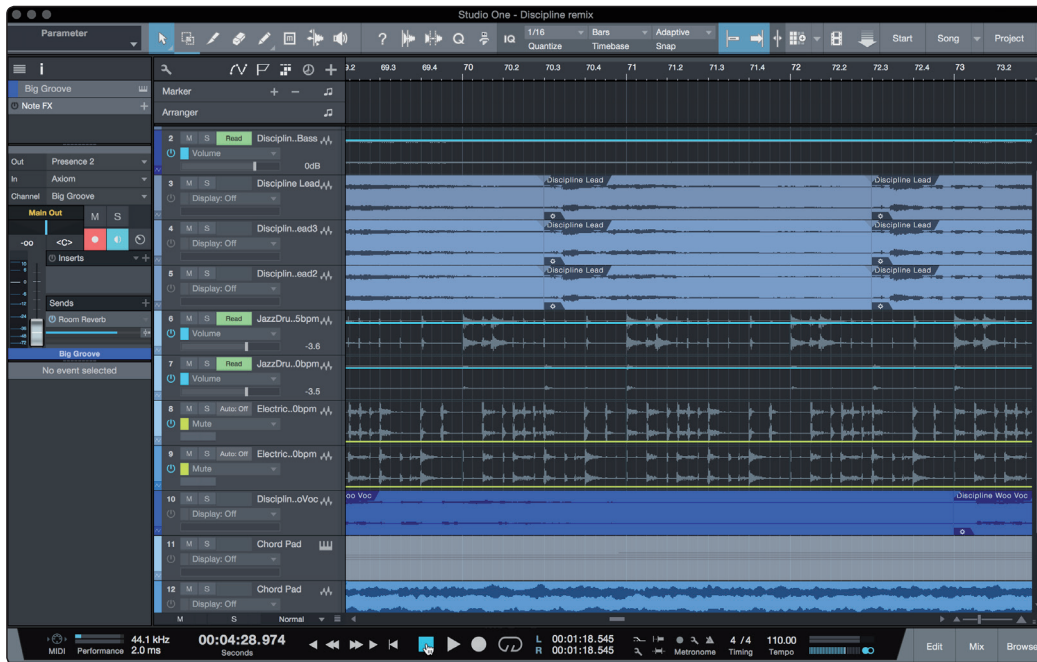


3. Select the Quantum interface you would like to use for the next bank of channels. Set the priority to "2" and the Clock Source to Wordclock.



4. If you are connected three or four Quantum interfaces, you will repeat step 3 and set the priority to 3 and 4 respectively.
Your Quantum system is now ready to use.

6 Studio One Artist Quick Start



All PreSonus professional recording products come with Studio One Artist recording and production software. Whether you are about to record your first album or your fiftieth, Studio One Artist provides you with all of the tools necessary to capture and mix a great performance. PreSonus audio interfaces also have access to advanced functions in Studio One's exclusive Cue Mix feature for PreSonus interfaces.

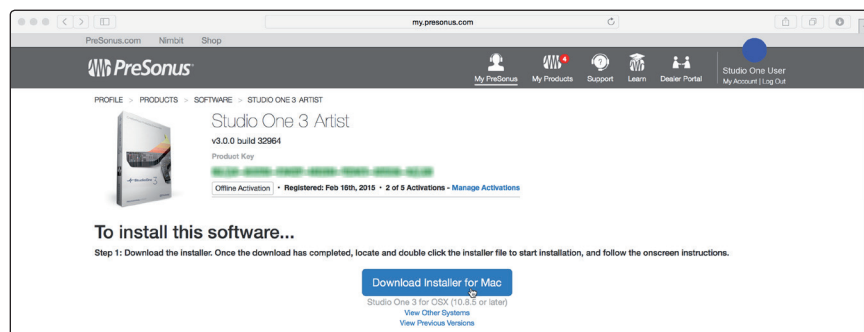
Power User Tip: As a valued PreSonus customer, you are eligible for a discount upgrade to Studio One Professional. For more details on the Studio One upgrade program for PreSonus customers, please visit <http://studioone.presonus.com/>.

6.1 Installation and Authorization

Once you have installed the drivers for your audio interface and connected it to your computer, you can use the included PreSonus Studio One Artist music-production software to begin recording, mixing, and producing your music. To install Studio One Artist, log into your My PreSonus account and register your interface. Your product key for Studio One Artist will automatically be registered to your My PreSonus account with your hardware registration.

Downloading and running the Studio One installer.

To install Studio One Artist, download the Studio One Artist installer from your My PreSonus account to the computer on which you will use it.



- **Windows users:** Launch the Studio One Artist installer and follow the onscreen instructions.
- **Mac users:** Drag the Studio One Artist application into the Applications folder on your Mac hard drive.

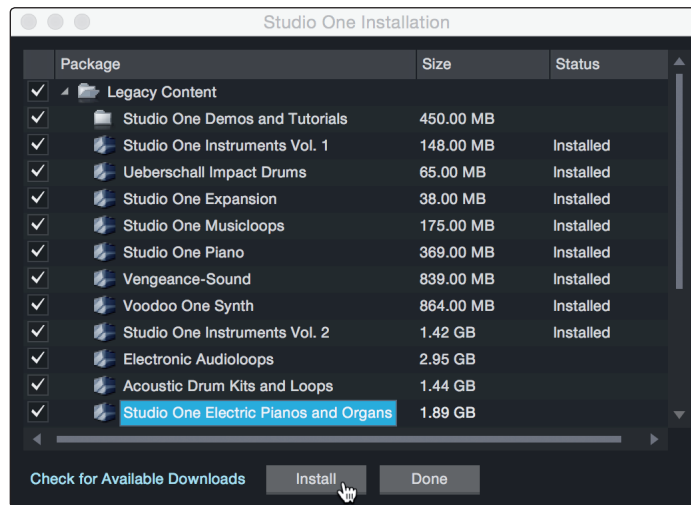
Authorizing Studio One

When Studio One is launched for the first time on your computer, it will communicate with your My PreSonus account and verify your registration. To ensure a seamless authorization process, make sure to download your installer to the computer on which you will be using it and be sure that your computer is connected to the Internet when you launch the application for the first time.

Installing bundled content for Studio One Artist.

Studio One Artist comes bundled with an array of demo and tutorial materials, instruments, loops, and samples. The Studio One Artist bundle includes all that you need to begin producing music.

The first time you launch Studio One Artist, you will be prompted to install its companion content. Select the content you wish to add and click "Install." The content will automatically begin to download and install from your My PreSonus user account.



Power User Tip: You may be prompted to enter your My PreSonus user account information. Clicking "Remember Credentials" will allow you to have immediate access to any content you purchase from the PreSonus Marketplace.

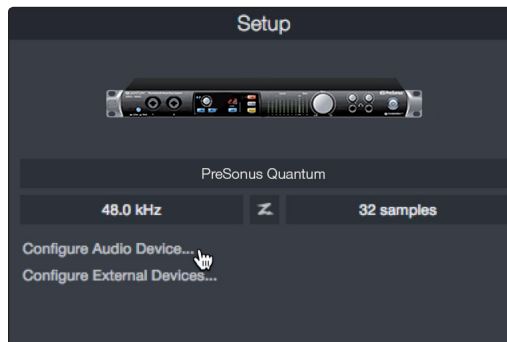
6.2 Setting Up Studio One

Studio One Artist was designed to work with PreSonus interfaces and provides unique interoperability and simplified setup. When Studio One Artist is launched, by default you will be taken to the Start page. On this page, you will find document-management and device-configuration controls, as well as a customizable artist profile, a news feed, and links to demos and tutorials from PreSonus. If you have an Internet connection on your computer, these links will be updated as new tutorials become available on the PreSonus Web site.

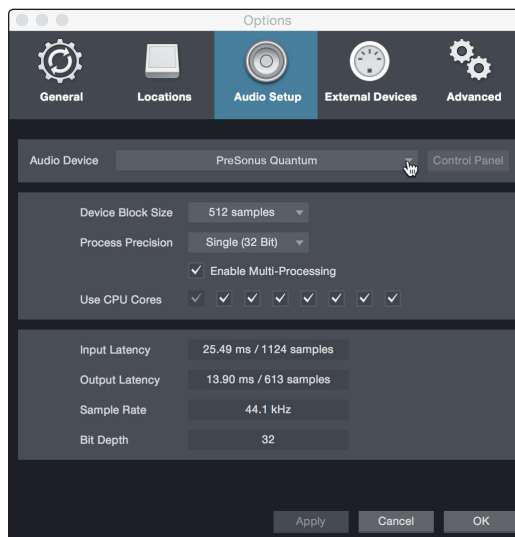
Complete information on all aspects of Studio One Artist is available in the Reference Manual PDF located within Studio One. The information in this tutorial covers only the basic aspects of Studio One Artist and is intended to get you set up and recording as quickly as possible.

6.2.1 Configuring Audio Devices

1. In the middle of the Start page, you will see the Setup area. Studio One Artist automatically scans your system for all available drivers and selects a driver. By default, it will choose a PreSonus driver if one is available.



2. If you do not see your device listed on the Start page when you launch Studio One, click on the Configure Audio Devices link in the Setup area to open the Options window.



In the Options window, click on the Audio Setup tab and select your device driver from the pull-down.

6.2.2 Configuring MIDI Devices

From the External Devices window in Studio One Artist, you can configure your MIDI keyboard controller, sound modules, and control surfaces. This section will guide you through setting up your MIDI keyboard controller and sound modules. Please consult the Reference Manual located within Studio One for complete setup instructions for other MIDI devices.

If you are using a third-party MIDI interface or USB MIDI-controller keyboard, you must install any required drivers for these devices before beginning this section. Please consult the documentation that came with your MIDI hardware for complete installation instructions.

If you do not have any MIDI devices, please skip to Section 6.3.

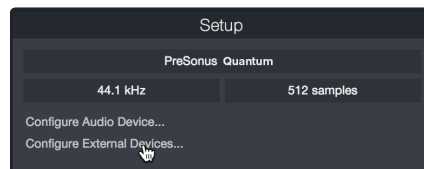
Setting up an external MIDI keyboard controller from the Start page.

A MIDI keyboard controller is a hardware device that is generally used for playing and controlling other MIDI devices, virtual instruments, and software parameters. In Studio One Artist, these devices are referred to as Keyboards, and they must be configured before they are available for use. In some cases, your MIDI keyboard controller is also used as a tone generator. Studio One Artist views the controller and tone-generation functions as two different devices; a MIDI keyboard controller and a sound module. The MIDI controls (keyboard, knobs, faders, etc.) will be set up as a Keyboard. The sound modules will be set up as an Instrument.

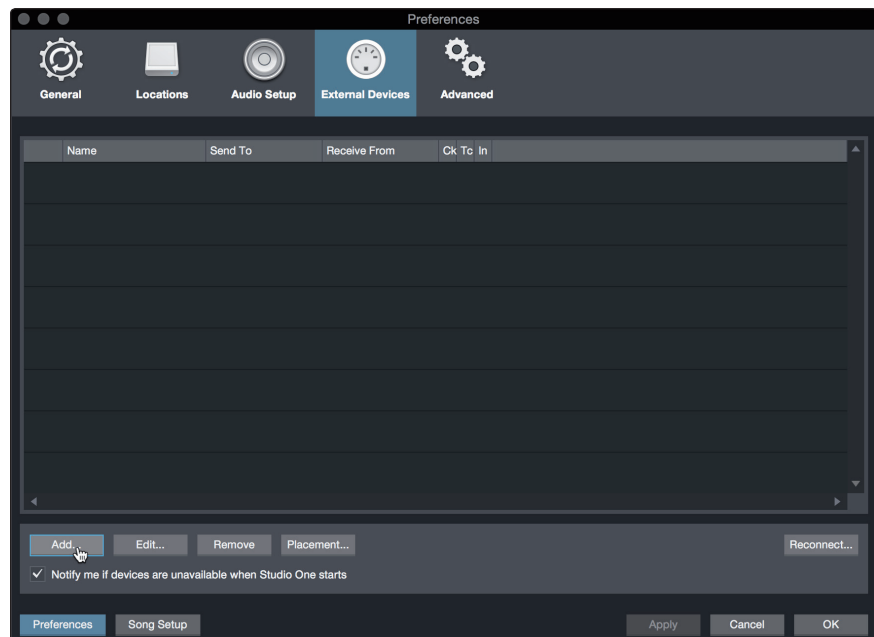
You can set up your external MIDI devices from the Setup area in the Start page. Before setting up a new Song for recording, take a moment to configure external devices.

Make sure you have connected the MIDI Out of your external MIDI controller to a MIDI In on your PreSonus audio interface (if available) or other MIDI interface. If you are using a USB MIDI controller, connect it to your computer and power it on.

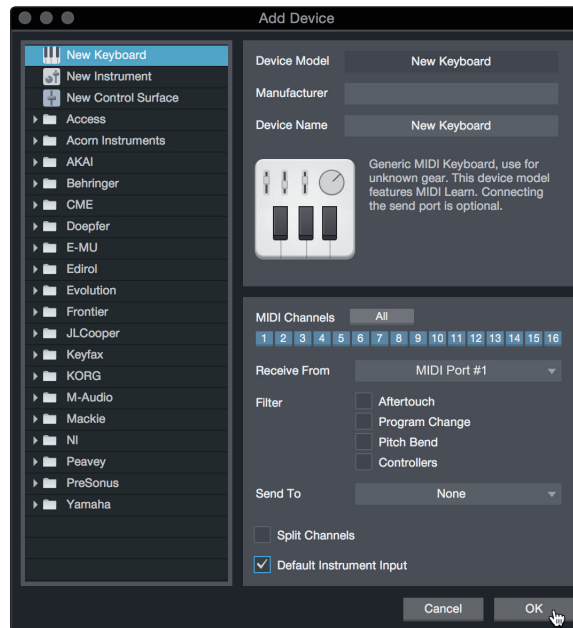
1. Click on the Configure External Devices link in the Setup area on the Start page to launch the External Devices window.



2. Click the Add button. This will launch the Add Device window.



- From the menu on the left, select your MIDI controller from the list of manufacturers and models. If you do not see your MIDI controller listed, select New Keyboard. At this point, you can customize the name of your keyboard by entering the manufacturer and device names.



- You must specify which MIDI channels will be used to communicate with this keyboard. For most purposes, you should select all MIDI channels. If you are unsure of which MIDI channels to choose, select all 16.
- Studio One allows you to filter out specific control functions. If you would like Studio One to ignore Aftertouch, Pitch Bend, Program Change, or All CC messages, enable filtering for any or all of these messages.
- In the Receive From drop-down menu, select the MIDI interface input from which Studio One Artist will receive MIDI data (that is, the MIDI port to which your keyboard is connected).

Power User Tip: In the Send To drop-down menu, select the MIDI interface output from which your Studio One Artist will send MIDI data to your keyboard. If your keyboard controller doesn't need to receive MIDI data from Studio One, you can leave this unselected.

- If this is the only keyboard that you will use to control your external synthesizers and virtual instruments, you should check the box next to Default Instrument Input. This will automatically assign your keyboard to control all MIDI devices in Studio One Artist.
- Click OK.

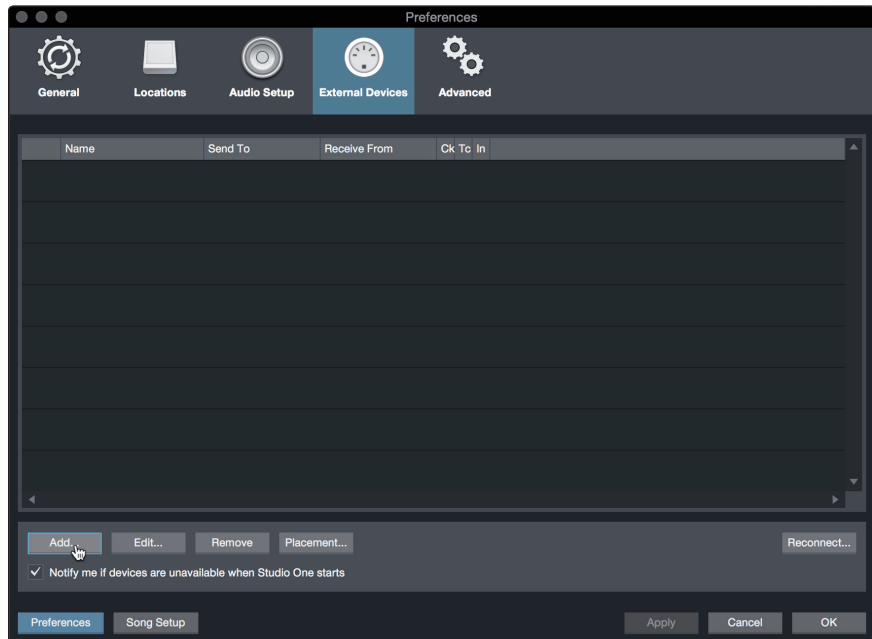
If you have a sound module that you'd like to connect, leave the External Devices window open and proceed to the next part of this section. If not, you can close the window and *skip to Section 6.3*.

Setting up an external MIDI sound module from the Start page.

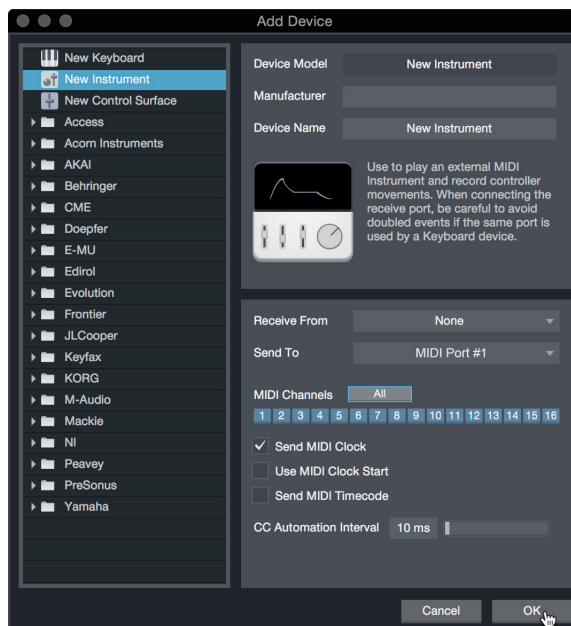
MIDI instrument controllers (keyboards, MIDI guitars, etc.) send musical information in the form of MIDI data to tone modules and virtual instruments, which respond by generating sound, as instructed. Tone modules can be standalone sound devices or can be integrated into a MIDI instrument, such as a keyboard synthesizer. Studio One Artist refers to all tone generators as Instruments. Once you have set up your MIDI keyboard controller, take a moment to configure your sound module.

Make sure you have connected the MIDI In of your external sound module to the MIDI Out of your MIDI interface.

1. In the External Devices window, click the Add button.



2. Select your device in the menu on the left. If your device is not listed, select New Instrument. At this point you can customize the name of your keyboard by entering the manufacturer and device names.



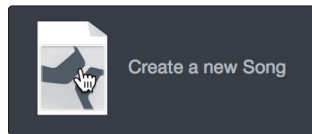
- Specify which MIDI channels will be used to communicate with this sound module. For most purposes, you should select all MIDI channels. If you are unsure of which MIDI channels to select, we suggest you select all 16.
- In the Send To menu, select the MIDI interface output from which Studio One Artist will send MIDI data to your sound module. Click OK and close the External Devices window. You are now ready to start recording in Studio One Artist.

The rest of this Quick Start Guide will go over how to set up a Song and will discuss some general workflow tips for navigating through the Studio One Artist environment.

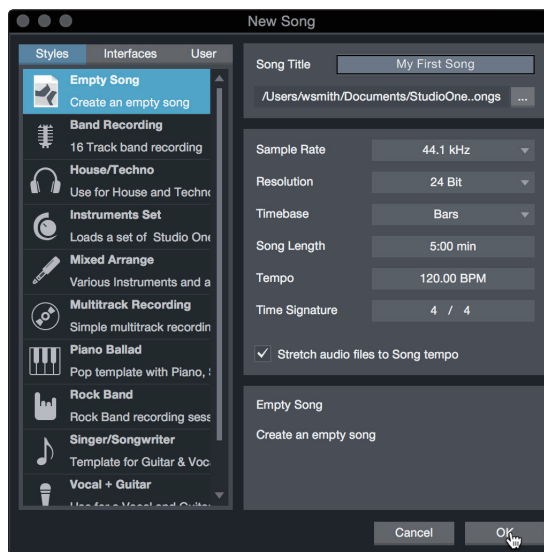
6.3 Creating a New Song

Now that you've configured your audio and MIDI devices, let's create a new Song. We'll start by setting up your default audio I/O.

- From the Start page, select Create a New Song.



- In the New Song window, name your Song and choose the directory in which you'd like it saved. You'll notice a list of templates on the left. These templates provide quick setups for a variety of devices and recording situations. The section will describe creating a Song from an empty session.

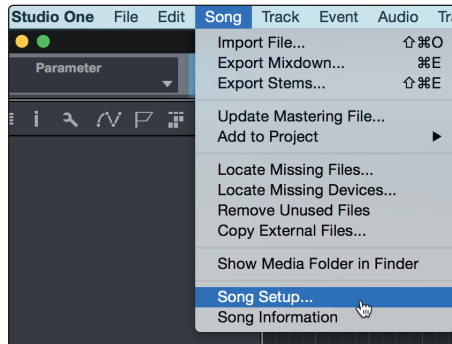


- Select Empty Song from the Templates list. At this point, you should give your Song a name and select your preferred sample rate and bit depth for recording and playback. You can also set the length of your Song and the type of time format you would like the timeline to follow (notation bars, seconds, samples, or frames). Click the OK button when you are finished.

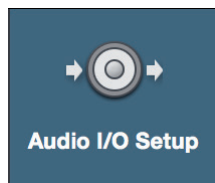
Power User Tip: If you plan to import loops into your Song, make sure that the Stretch Audio Files to Song Tempo option is selected. This will automatically import loops at the correct BPM.

6.3.1 Configuring Your I/O

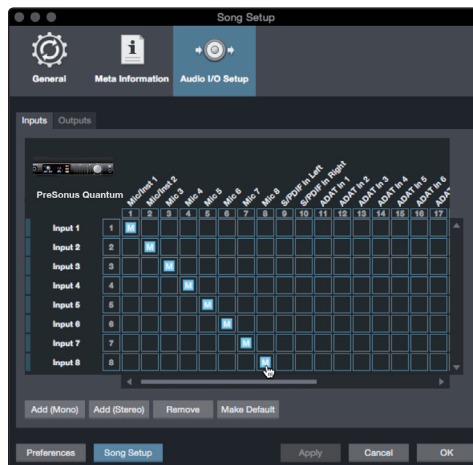
1. Click on Song | Song Setup to set your sample rate and resolution and configure your audio I/O.



2. Click on the Audio I/O Setup tab.

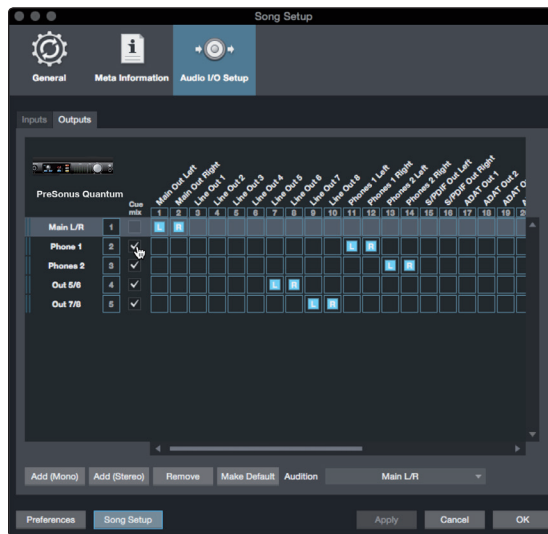


3. From the Inputs tab, you can enable any or all of the inputs on your PreSonus Quantum audio interface that you'd like to have available. We recommend that you create a mono input for each of the inputs on your interface. If you plan on recording in stereo, you should also create a few stereo inputs.



Power User Tip: If you plan on using the Talkback mic, you will need to enable it as an input for your session and create a track for it.

- Click on the Outputs tabs to enable any or all of the outputs on your Quantum audio interface. In the lower right corner, you will see the Audition select menu. This allows you to choose the output from which you will audition audio files prior to importing them into Studio One Artist. In general, you will want this to be the main output bus.



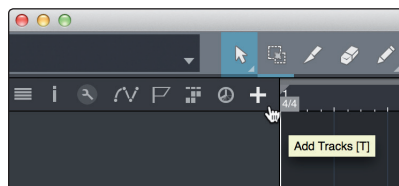
Power User Tip: If you would like this I/O configuration to be the same every time you open Studio One, click the Make Default button.

Studio One allows you to create monitor mixes right from the console. To enable this function, you must designate at least one output pair to be a Cue Mix output. Click on the Cue Mix box next to any output pair you'd like to use as a monitor mix output to enable this feature.

For more information, see [Section 6.4](#).

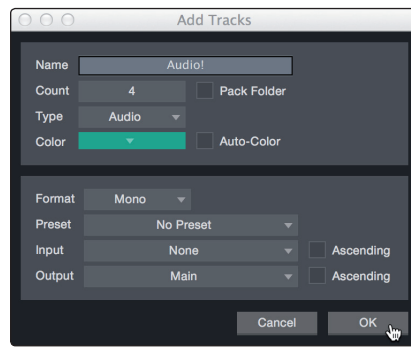
6.3.2 Creating Audio and MIDI Tracks

- In the upper left corner of the Arrange window, you will notice several buttons. The button furthest to the right is the Add Tracks button. Click on this button to open the Add Tracks window.



- In the Add Tracks window, you can customize the track name and color, add a preset rack of effects, and set the physical source for the input and output of your audio tracks. Most important, you can select the number and type of tracks you'd like to create.

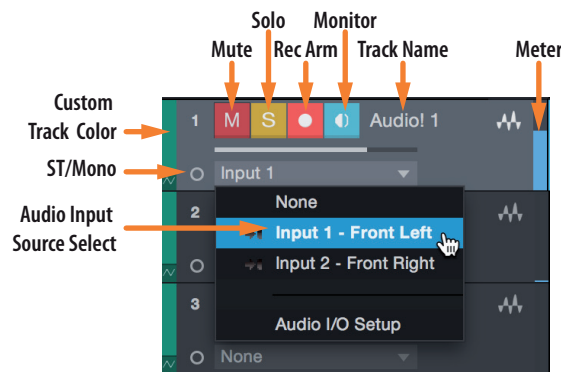
Power User Tip: If you'd like the Talkback mic available for your session, create a track with the Talkback input (Input 27) set as the source. This will allow you to route it to your Cue Mix outputs. See [Section 6.5](#).



- **Audio.** Use this track type to record and playback audio files.
- **Instrument.** Use this track to record and playback MIDI data to control external MIDI devices or Virtual Instrument plug-ins.
- **Automation.** This track type lets you create automated parameter controls for your session.
- **Folder.** This track helps you to manage your session as well as to quickly edit multiple tracks at once.

Power User Tip: If you would like to add an audio track for each of the available inputs, simply go to **Track | Add Tracks for All Inputs**.

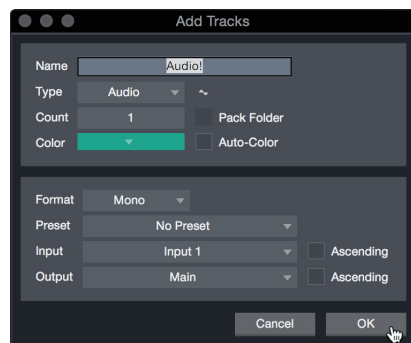
Track anatomy:



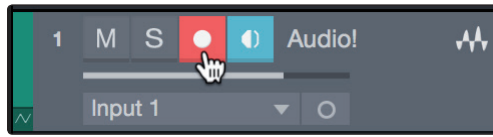
Note: MIDI tracks are nearly identical to Audio tracks. The Input Source list for MIDI tracks lists available external MIDI devices as well as any virtual instruments that have been added to the Song.

6.3.3 Recording an Audio Track

1. To begin recording, create an audio track from the Add Tracks window, set its input to Input 1 on your Quantum-series interface, and connect a microphone to the same input.



2. Select Record Enable on the track. Turn up the Input 1 level on your audio interface while speaking/singing into the microphone. You should see the input meter in Studio One Artist react to the input. Adjust the gain so the input level is near its maximum without clipping (distorting).

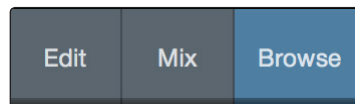


You are now ready to start recording. For complete instructions, *please consult the Studio One Reference manual located in Help | Studio One Reference Manual.*

6.3.4 Adding Virtual Instruments and Effects

You can add plug-ins and instruments to your Song by dragging-and-dropping them from the browser. You can also drag an effect or group of effects from one channel to another, drag in customized effects chains, and instantly load your favorite virtual-instrument preset without ever scrolling through a menu.

Opening the browser.

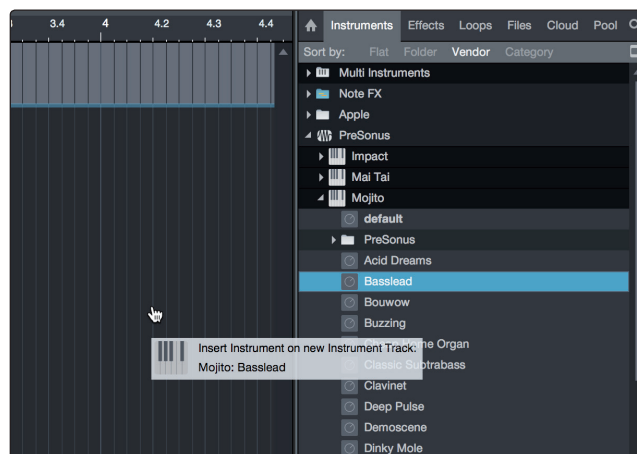


In the lower right corner of the Arrange window are three buttons:

- The **Edit** button opens and closes the audio and MIDI editors.
- The **Mix** button opens and closes the Mixer window.
- The **Browse** button opens the browser, which displays all of the available virtual instruments, plug-in effects, audio files, and MIDI files, as well as the pool of audio files loaded into the current session.

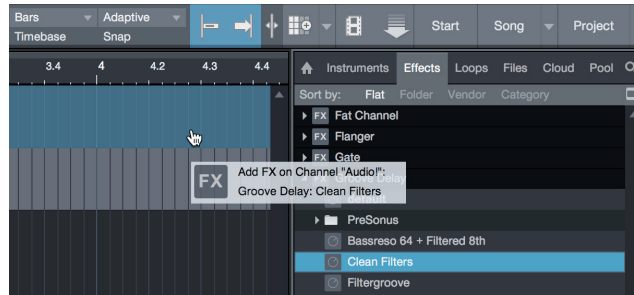
Drag-and-drop virtual instruments.

To add a virtual instrument to you session, open the browser and click on the Instrument button. Select the instrument or one of its patches from the instrument browser and drag it into the Arrange view. Studio One Artist will automatically create a new track and load the instrument as the input.



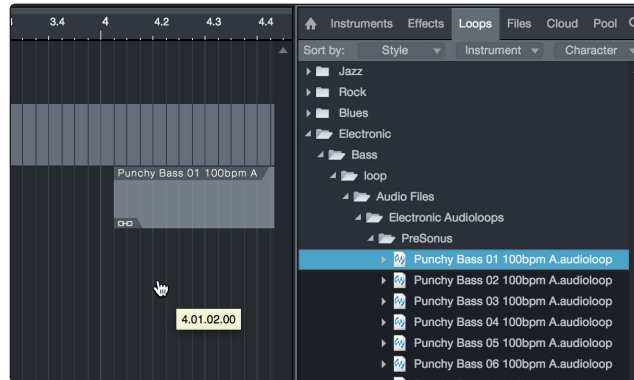
Drag-and-drop effects.

To add a plug-in effect to a track, click the Effects button in the browser and select the plug-in or one of its presets in the effects browser. Drag-and-drop the selection over the track to which you would like to add the effect.



Drag-and-drop audio and MIDI files.

Audio and MIDI files can be quickly located, auditioned, and imported into your Song by dragging them from the file browser into the Arrange view. If you drag the file to an empty space, a new track will be created with that file placed at the position to which you dragged it. If you drag the file to an existing track, the file will be placed as a new part of the track.



6.4 Integrated Quantum Controls

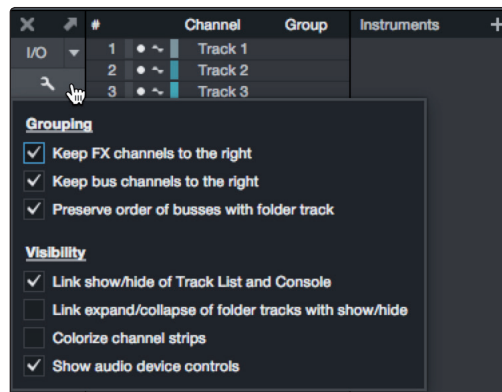
You can control the hardware functions of your Quantum interface from within Studio One.

6.4.1 Preamp Controls

As soon as you set an analog Quantum input as the input source for a track in Studio One, you'll find its preamp controls in the Studio One mixer. If a DigiMax DP88 is connected to the ADAT inputs on your Quantum, you'll find these controls available for those inputs as well.

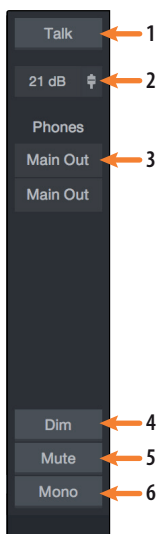


You can choose to hide the preamp controls for your Quantum interface from the Console Options menu. Simply uncheck the box next to “Show audio device controls.”



Note: Because preamp control for the DigiMax DP88 is bidirectional, both the ADAT input and the ADAT output must be connected in order for Studio One to display its preamp controls.

6.4.2 Talkback and Monitoring



1. **Talk Button (Quantum).** Use this to engage the Talk function. This will route the onboard talkback microphone to the cue mix outputs.
2. **Talkback Level (Quantum).** Sets the level of the onboard talkback microphone.
3. **Headphone Source.** For Quantum users, you can set the source for both headphone outputs. For Quantum 2 users, you can select the "B" source for your headphones. These outputs can also be accessed from the audio outputs list inside Studio One or UC Surface.
4. **Dim (Quantum).** Lowers the output level of the Main Left / Right Outputs by 20 dB.
5. **Mute (Quantum).** Mutes the Main Left / Right Outputs.
6. **Mono (Quantum).** Sums the stereo Main Left / Right Output signal to mono.

6.5 Monitor Mixing in Studio One

You can set up monitor mixes with your Quantum interface using Studio One's unique Cue Mix feature. This feature takes over the monitor mix control software for your Quantum-series interface and provides level and pan control from within Studio One. Simply designate a pair or pairs of outputs as a cue mix, and you'll find the Cue Mix controls in your Studio One mixer.

You can create a cue mix and send it to any output on your Quantum (Mains, Headphones, General Purpose, ADAT, or S/PDIF). You simply need to create an output bus and enable Cue Mix.

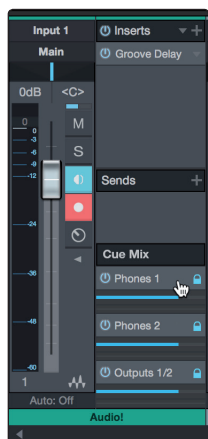
***Power User Tip:** It is possible to designate the main output as a cue mix. This is helpful if you often record yourself and require quick access to monitoring for live inputs. When the main output is designated as a Cue Mix, a button will appear on any audio channel, with an assigned audio input in the Console, below the Mute, Solo, Record, and Monitor buttons.*



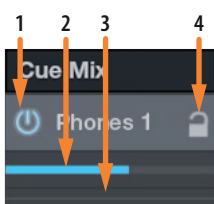
6.5.1 Cue Mix Functions

Once you have created a cue mix output, you will notice a special Send object in the channels of the Console. This Send object is called a Cue Mix object.

In the Small Console view, Cue Mix objects appear in the far left column of the extended channel.



In the Large Console view, Cue Mix objects appear below the Send device rack on each channel.

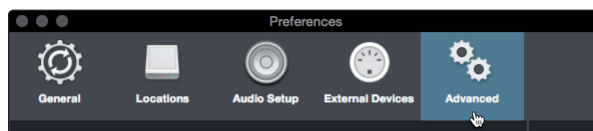


1. **Activate Button.** To completely remove any channel from a Cue Mix, simply deactivate the Cue Mix object for that channel. In most instances, you will leave this enabled.
2. **Horizontal Level Fader.** This is the channel's Cue Mix volume control. By default this level will be identical to the level set on the channel's fader. Once you move the Cue Mix level fader, the volume of that channel in the Cue Mix will be independent of the main mix or any other cue mix in the session.
3. **Pan Control.** This sets the pan position for the channel in the Cue Mix outputs. Like volume, panning is identical to the main mix by default.
4. **Lock to Channel button.** By default, the Lock to Channel button is enabled, and level and pan values are locked to the Channel level and pan controls for the Main mix. This means that each Cue Mix will be identical to the Main mix in the Console. Changing the level or panning in the Main mix will change the level or panning in the Cue Mix. However, changing the level or panning in the Cue Mix object will unlock both settings, allowing independent control of level and panning for each channel in each Cue Mix. Thus, the level and panning for channels in a Cue Mix can be completely different from the related level and pan in the Main mix. At any time, you can lock the Cue Mix level and pan back to the channel settings by clicking on the Lock to Channel button.

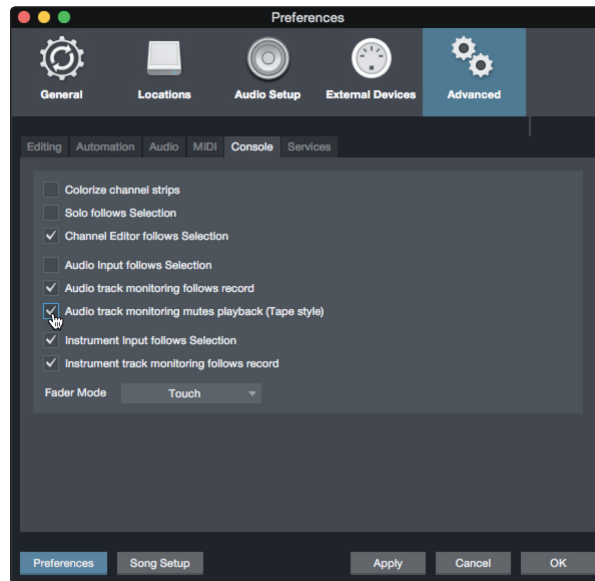
6.5.2 Punching In

The Quantum's unique integration with Studio One and ultra-low latency performance make punching in easier than ever. This section will guide you through setting up a punch in so that there is no change sonically between audio you're playing back and the audio you're recording.

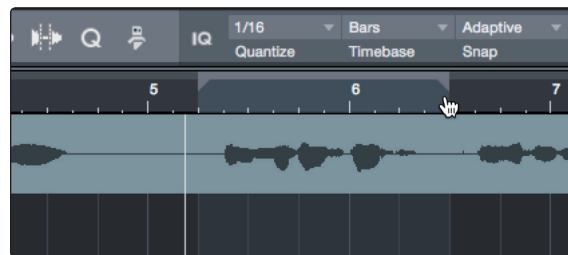
1. Before you begin, go to Studio One>Preferences and click on the Advanced tab.



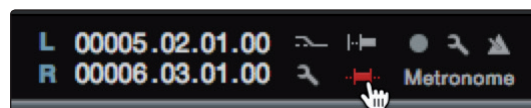
- On the Console preference tab, check the box next to "Audio track monitoring mutes playback (Tape Style). This will allow you use Cue Mix to monitor during a punch in. Click Apply and then OK.



- After you have recorded your audio, set the punch in and out points in the timeline.



- Enable the Autopunch button the left of the Metronome settings in the transport.



- Record Arm your track, making sure to disable input monitoring.



You're now ready to punch in. Simply rewind to the point in the song at which you'd like to start and click record.

7 Technical Information

7.1 Specifications

Microphone Preamp (XLR Balanced)

Type	XLR Female (via Combo), Balanced Remote
Maximum Input Level	+10 dBu (Balanced, min. gain)
Gain Control Range	60 dB
Frequency Response	20 Hz to 20 kHz (+/- 0.15 dB, unity gain, 48 kHz) 20 Hz to 40 kHz (+/- 0.22 dB, unity gain, 96 kHz)
Dynamic Range	> 110 dB
THD+N (min. gain, A-wtd)	< 0.005%
Input Impedance	1600Ω
EIN (max gain, 40Ω, 22 kHz BW, A-wtd)	< -131 dBu
Input Impedance	1.6kΩ
Phantom Power	+48V, > 8 mA per channel

Instrument Inputs

Type	¼" TS Female (via Combo), Unbalanced
Maximum Input Level	+15 dBu
Gain Control Range	60 dB
Frequency Response	20 Hz to 20 kHz (+/- 0.15 dB, unity gain, 48 kHz) 20 Hz to 40 kHz (+/- 0.22 dB, unity gain, 96 kHz)
Dynamic Range (min. gain, A-wtd)	> 106 dB
Dynamic Range (mid. Gain, un-wtd)	> 105 dB
THD+N (min. gain)	< 0.005%
Input Impedance	> 1 MΩ

Line Inputs

Type	¼" TRS Female (via Combo), Balanced
Maximum Input Level	+18 dBu (Balanced, min. gain)
Frequency Response	20 Hz to 20 kHz (+/- 0.15 dB, unity gain, 48 kHz) 20 Hz to 40 kHz (+/- 0.22 dB, unity gain, 96 kHz)
Dynamic Range (min. gain, A-wtd)	> 118 dB
THD+N (1 kHz, min. gain)	< 0.005%
Input Impedance	10 kΩ

Main and Line Outputs

Type	¼" TRS Female, Impedance Balanced
Maximum Output Level	+18 dBu
Frequency Response	20 Hz to 20 kHz (+/- 0.15 dB, unity gain, 48 kHz) 20 Hz to 40 kHz (+/- 0.22 dB, unity gain, 96 kHz)
Dynamic Range (A-wtd)	> 118 dB
THD+N	< 0.0035% (1 kHz, +4 dBu)
Output Impedance	51Ω

Headphone Outputs

Type	1/4" TRS Female, Stereo, Unbalanced, (x2 Quantum, x1 Quantum 2)
Maximum Output Level	175 mW / channel (56Ω load)
Frequency Response	20 Hz to 20 kHz (+/- 0.5 dB, 48 kHz)
Dynamic Range (A-wtd)	> 110 dB
THD+N	< 0.03% (1 kHz)
Headphone Impedance (working range)	16Ω to 300Ω

Crosstalk

Input to Input	< -110 dB
Output to Output	< -115 dB
Input to Output	< -120 dB

Internal Talkback Microphone

Type	Electret Condenser
Sensitivity	-42 dB

Signal Level LEDs

Signal 1	-50 dBFS
Signal 2	-30 dBFS
Signal 3	-20 dBFS
Signal 4	-10 dBFS
Signal 5	-6 dBFS
Signal 6	-4 dBFS
Signal 7	-2 dBFS
Clip	-0.5 dBFS

Digital Audio

Connection Type	Thunderbolt 2
ADC Dynamic Range	120 dB (A-wtd)
DAC Dynamic Range	120 dB (A-wtd)
Bit Depth	24 bits
Internally Supported Sample Rates	44.1, 48, 88.2, 96, 176.4, 192 kHz

Clock

Jitter	<70 ps RMS (20 Hz – 20 kHz)
Jitter Attenuation	>60 dB (1 ns in => 1 ps out)

8 Warranty Information

PreSonus' warranty obligations for this hardware product are limited to the terms set forth below:

8.1 How Consumer Law Relates To This Warranty

THIS WARRANTY GIVES YOU SPECIFIC LEGAL RIGHTS, AND YOU MAY HAVE OTHER RIGHTS THAT VARY FROM STATE TO STATE (OR BY COUNTRY OR PROVINCE). OTHER THAN AS PERMITTED BY LAW, PRESONUS DOES NOT EXCLUDE, LIMIT OR SUSPEND OTHER RIGHTS YOU MAY HAVE, INCLUDING THOSE THAT MAY ARISE FROM THE NONCONFORMITY OF A SALES CONTRACT. FOR A FULL UNDERSTANDING OF YOUR RIGHTS YOU SHOULD CONSULT THE LAWS OF YOUR COUNTRY PROVINCE OR STATE.

PreSonus Products And EU Statutory Warranty

When you purchase PreSonus products, European Union consumer law provides statutory warranty rights in addition to the coverage you receive from the PreSonus limited warranty. A summary of the EU Statutory Warranty and the PreSonus Limited Warranty is below:

	EU Consumer Law	PreSonus Limited Warranty
Repair or Replacement Coverage For	Defects present when customer takes delivery	Defects arising after customer takes delivery
Warranty Period	2 years (minimum) from original date of purchase (unless superseded by PreSonus)	1 year from original date of purchase (unless superseded by PreSonus)
Cost of Coverage	Provided at no additional cost	Included at no additional cost
Who to contact to make a claim	The seller	PreSonus technical support for your region

What This Warranty Covers

PreSonus Audio Electronics, Inc., ("PreSonus") warrants defects in material and workmanship in PreSonus-branded products under normal use. This Limited Warranty applies only to hardware products manufactured by or for PreSonus that can be identified by the PreSonus trademark, trade name, or logo affixed to them.

Exclusions and Limitations

This warranty does **not** cover the following:

1. Damage caused by accident, abuse, improper installation, failure to follow instructions in the applicable owner's manual or improper operation, rental, product modification, alteration, or neglect.
2. Damage from improper grounding, faulty wiring (AC and signal), faulty equipment, or connection to a voltage range outside published specifications (see applicable owner's manual).
3. Damage to drivers or diaphragm assemblies found to have burnt voice coils from over/under driving or signal surge from another device.
4. Damage occurring during shipment or improper handling.
5. Damage caused by repair or service performed by persons not authorized by PreSonus.
6. Products on which the serial number has been altered, defaced, or removed.

7. Products purchased from an unauthorized PreSonus dealer (products that have transferable warranties are excluded from this provision provided the customer and the product are registered with PreSonus).

Who This Warranty Protects

This Warranty protects only the original retail purchaser of the product (products that have transferable warranties are excluded from this provision provided the customer and the product are registered with PreSonus)

How Long This Warranty Lasts

A 1-Year Limited Warranty begins on the original date of purchase from the retail purchaser.

What PreSonus Will Do

PreSonus will repair or replace, at our sole and absolute option, products covered by this warranty at no charge for labor or materials. If the product must be shipped to PreSonus for warranty service, the customer must pay the initial shipping charges. PreSonus will pay the return shipping charges.

How to Get Warranty Service (USA)

1. You must have an active user account with PreSonus and your hardware must be on file with your account. If you do not have an account, please go to <https://my.presonus.com> and complete the registration process.
2. Contact our Technical Support Department at (225) 216-7887 or log a support ticket at: <http://support.presonus.com>. TO AVOID THE POSSIBILITY OF SENDING IN A PRODUCT THAT DOES NOT HAVE A PROBLEM, ALL SERVICE REQUESTS SHALL BE CONFIRMED BY OUR TECH SUPPORT DEPARTMENT.
3. The return authorization number, as well as shipping instructions, shall be provided after your service request is reviewed and confirmed.
4. The product should be returned for service in the original product packaging. Products may be shipped in a manufactured "flight" or "road" style cases but PreSonus will NOT cover any shipping damage to these cases. Products that are not shipped in the original product package or a manufactured case may not receive a warranty repair, at PreSonus' sole discretion. Depending on the product model and the condition of your original packaging, your product may not be returned to you in the original packaging. The return shipping box may be a generic box that has been fitted for that model tested if the original gift box is not available.

How to Get Warranty Service (outside of USA)

1. You must have an active user account with PreSonus and your hardware must be on file with your account. If you do not have an account, please go to: <https://my.presonus.com> and complete the registration process.
2. Contact the Technical Support/Service Department for your region at www.presonus.com/buy/international_distributors and follow procedures provided by your PreSonus contact.

Limitation of Implied Warranties

ANY IMPLIED WARRANTIES, INCLUDING WARRANTIES OF MERCHANTABILITY AND FITNESS FOR A PARTICULAR PURPOSE, ARE LIMITED IN DURATION TO THE LENGTH OF THIS WARRANTY.

Some states, countries, or provinces do not allow limitations on how long an implied warranty lasts, so the above limitation may not apply to you.

Exclusion of Damages

PRESONUS'S LIABILITY FOR ANY DEFECTIVE PRODUCT IS LIMITED TO THE REPAIR OR REPLACEMENT OF THE PRODUCT, AT PRESONUS'S SOLE OPTION. IF PRESONUS ELECTS TO REPLACE THE PRODUCT, THE REPLACEMENT MAY BE A RECONDITIONED UNIT. IN NO EVENT WILL PRESONUS BE LIABLE FOR DAMAGES BASED ON INCONVENIENCE, LOSS OF USE, LOST PROFITS, LOST SAVINGS, DAMAGE TO ANY OTHER EQUIPMENT OR OTHER ITEMS AT THE SITE OF USE, AND, TO THE EXTENT PERMITTED BY LAW, DAMAGES FOR PERSONAL INJURY, OR ANY OTHER DAMAGES WHETHER INCIDENTAL, CONSEQUENTIAL OR OTHERWISE, EVEN IF PRESONUS HAS BEEN ADVISED OF THE POSSIBILITY OF SUCH DAMAGES.

Some states, countries, or provinces do not allow limitations on how long an implied warranty lasts, so the above limitation may not apply to you.

If you have any questions about this warranty or service received, please contact PreSonus (USA) at +1-225-216-7887 or contact one of our authorized international distributors at www.presonus.com/buy/international_distributors.

Product features, design, and specifications are subject to change without notice.

Added bonus: PreSonus' previously Top Secret recipe for . . .

Redfish Couvillion

Ingredients:

- ¼ C Vegetable oil
- ¼ C flour
- 1 onion diced
- 1 clove garlic minced
- 1 green pepper diced
- 3 celery stalks diced
- 1 14oz can diced tomatoes
- 1 bottle light beer
- 2 bay leaves
- 1 tsp thyme
- 2 lbs Redfish fillets

Cooking Instructions:

1. In a heavy saucepan or large skillet, heat oil on medium high and slowly add flour a tablespoon at a time to create a roux. Continue cooking the roux until it begins to brown, creating a dark blond roux.
2. Add garlic, onions, green pepper, and celery to roux.
3. Sauté vegetables for 3-5 minutes until they start to soften.
4. Add tomatoes, bay leaves, thyme, and redfish. Cook for several minutes.
5. Slowly add beer and bring to a low boil.
6. Reduce heat and simmer uncovered for 30-45 minutes until redfish and vegetables are completely cooked, stirring occasionally. Break up redfish into bite size chunks and stir in. Add pepper or hot sauce to taste. Do not cover.
7. Serve over rice

Serves 6-8

While not one of Southeast Louisiana's more famous dishes, Redfish Couvillion is a favorite way to serve our favorite Gulf fish. Also known as Reds or Red Drum, Redfish is not only fun to catch, it's also delicious!

Quantum-series

Ultra-low latency Thunderbolt™ Audio Interfaces and Studio Command Centers

Owner's Manual



18011 Grand Bay Ct. • Baton Rouge,
Louisiana 70809 USA • 1-225-216-7887
www.presonus.com

Part# 70-1200061-B